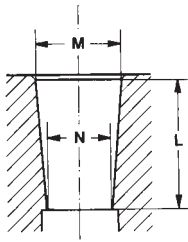
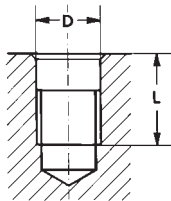


**Chuck taper mount dimensions according to DIN 238 and Jacobs norms**



Norm	Chuck taper mount	M mm	N mm	L mm
DIN 238	B6	6.35	5.85	10.0
	B10	10.094	9.4	14.5
	B12	12.065	11.1	18.5
	B16	15.733	14.5	24.0
	B18	17.780	16.2	32.0
	B22	21.793	19.8	40.5
	B24	23.825	21.3	50.5
JACOBS	J0	6.350	5.803	11.11
	J1	9.754	8.468	16.67
	J2	14.2	12.39	22.23
	J2 short	13.94	12.39	19.05
	J33	15.85	14.24	25.4
	J6	17.17	15.85	25.4
	J3	20.6	18.95	30.96
	J4	28.55	26.35	42.07

**Chuck threaded mount dimensions**



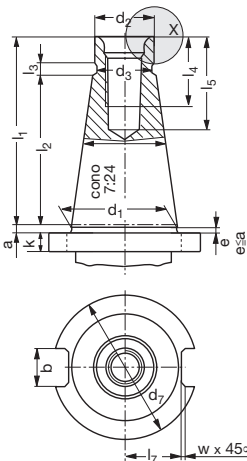
Threaded mount	Class	D mm	Pitch mm	L mm
3/8" x 24 UNF	3B	9.525	1.058	14.5
1/2" x 20 UNF	3B	12.700	1.270	16.0
5/8" x 16 UN	3B	15.875	1.588	19.0
3/4" x 16 UNF	3B	19.050	1.588	19.0
M14 x 2	MA	14.00	2.00	19.0
M18 x 2.5	MA	18.00	2.50	19.0

**Morse taper dimensions according to DIN 228**



Morse taper	A mm	B mm	C mm	D mm	E mm	F mm	Taper %
0	59.5	56.5	9.045	6.1	3.9	9.2	5.205
1	65.5	62.0	12.065	9.0	5.2	12.2	4.988
2	80.0	75.0	17.780	14.0	6.3	18.0	4.995
3	99.0	94.0	23.825	19.1	7.9	24.1	5.020
4	124.0	117.5	31.267	25.2	11.9	31.6	5.194
5	156.0	149.5	44.399	36.5	15.9	44.7	5.263
6	218.0	210.0	63.348	52.4	19.0	63.8	5.214

**Iso taper dimensions according to DIN 2080**



Iso taper	a mm	b mm	d1 mm	d2 mm	d3 mm	d4 mm	d5 mm	d6 mm	d7 mm	k mm	l1 mm	l2 mm	l3 mm	l4 mm	l5 mm	l6 mm	l7 mm	w mm
30	1.6	16.1	31.75	17.11	16.5	M12	13	16	50	8	68.4	48.4	3	24	33.5	5.5	16.2	1.6
40	1.6	16.1	44.45	25	24	M16	17	21.5	63	10	93.4	65.4	5	32	42.5	8.2	22.5	1.6
50	3.2	25.7	69.85	39.30	38	M24	26	32	97.5	12	126.8	101.8	8	47	61.5	11.5	35.3	2

